

Setup Guide

Speed Wi-Fi NEXT
WX03



Getting Ready

Remove ① and ② from the packaging. Have your own device to hand.



① WX03 unit

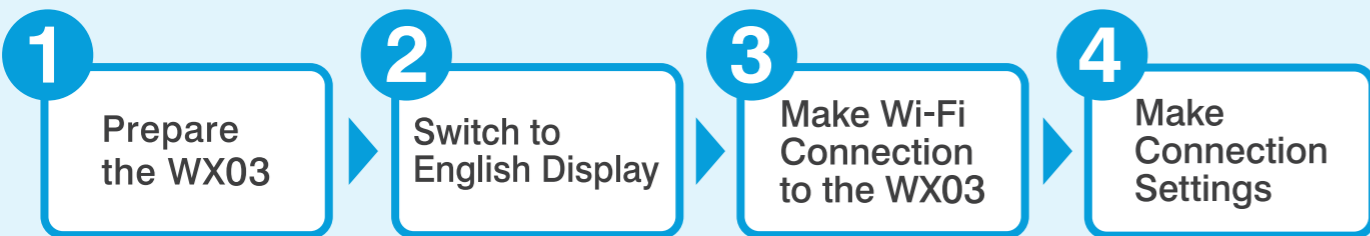


② au Micro IC card



③ Your own device
(Wi-Fi Capable)

Steps to making settings

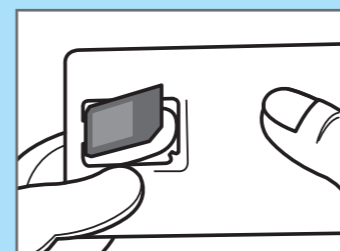


1

Prepare the WX03

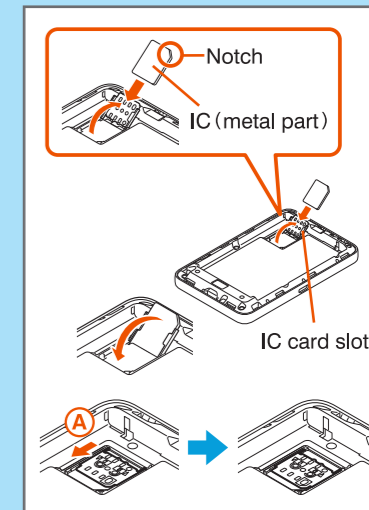
1. Remove the IC card from the card holder.

As shown in the diagram, remove the au Micro IC card from the card holder.



2. Insert the IC card into the WX03.

- ① Take off the rear cover, remove the battery pack.
- ② To release the lock, slide the metal fitting on the top of the card slot.
- ③ Raise the card slot and, with the metal side of the au Micro IC Card (LTE) facing up, insert it straight into the card slot.
- ④ Tilt the card slot and, while lightly pressing the metal fitting on the top, slide it in the direction of the arrow (A) to lock it.
- ⑤ Attach the battery pack to the WX03 main unit, align the rear cover with the edges of the WX03 main unit and push it until it clicks into place.



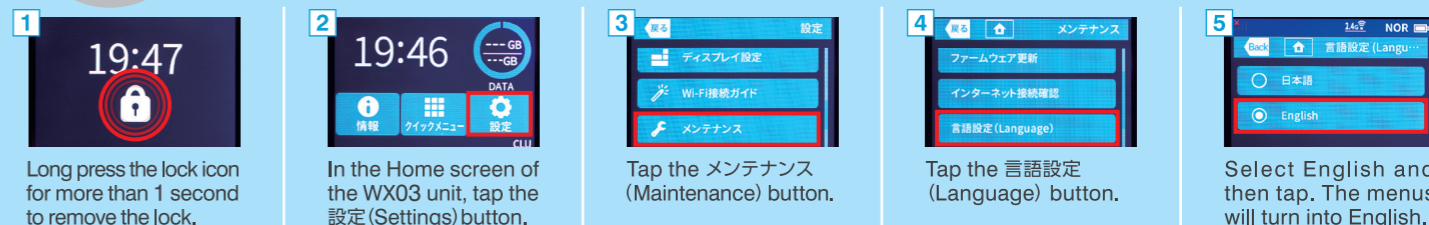
3. Charge the WX03, and then turn it on.

After charging up the WX03 unit, hold down its power button for up to 3 seconds until it turns on.



2

Switch to English Display



3

Make Wi-Fi Connection to the WX03

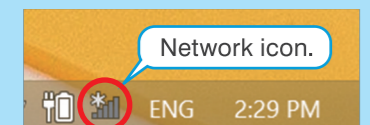
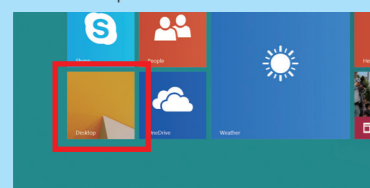
A PC (Windows 8) Wi-Fi connection method

If using a tablet or smartphone, see the reverse of this sheet.

A-1

From the **Start** screen, select **Desktop**, and then click the network icon (task tray).

The Desktop shown on the Start screen.

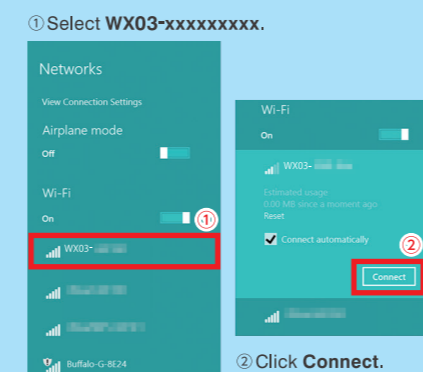


How To Confirm The Network Key

- 1 When the WX03's power button is lightly pressed, the lock screen is displayed. Long press the lock icon for more than 1 second to remove the lock.
*To unlock in sleep mode, long press the power button.
- 2 On the Home screen, tap **Information**.
- 3 Tap Next, then **Wi-Fi Information** which allows you to see the SSID and password.
- 4 The password displayed is the **Network Key** you need to enter into your device.

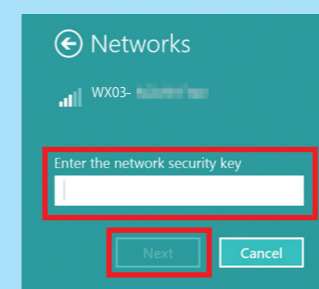
A-2

In the **Networks** list, find a name (SSID) starting WX03- then click Connect.



A-3

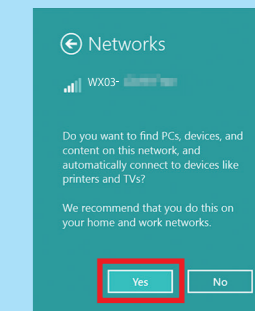
Refer to the right-hand **How To Confirm The Network Key** chart and then, at the **Enter the network security key** prompt, enter the network key. Click **Next**.



A-4

When asked **Do you want to turn on sharing between PCs and connect to devices on this network?** Select **Yes**, **turn on sharing and connect to devices**.

If the status of the **WX03-xxxxxxx** connection in the **Networks** list is **"Limited"** then settings to this point are complete.



Please continue to the reverse side for

4 Make Connection Settings

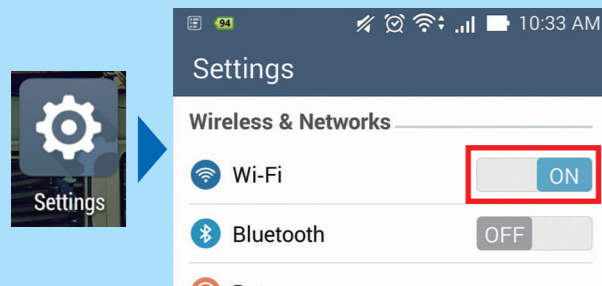
3 Make Wi-Fi Connection to the WX03

If using a PC, please see the reverse of this sheet.

B Tablet or smartphone (Android) Wi-Fi connection method

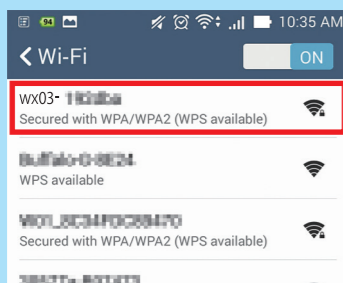
B-1

In the **Settings** menu, under **WIRELESS & NETWORKS**, make sure **Wi-Fi** is ON.



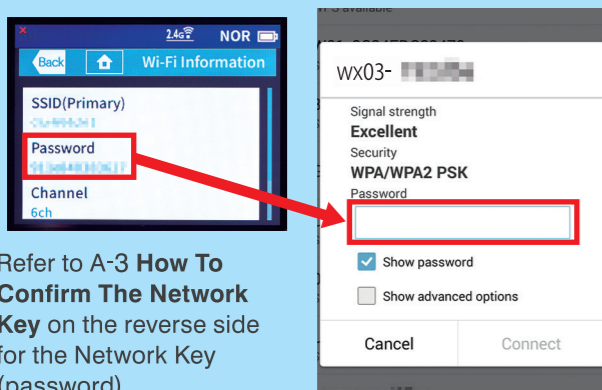
B-2

Select the network name starting **WX03-**.



B-3

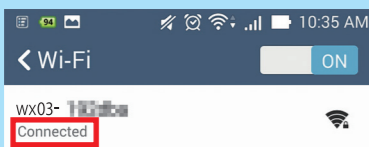
Refer to A-1 **How To Confirm The Network Key** on the reverse side and enter the Network Key in the **Password** field, then tap **Connect**.



Refer to A-3 **How To Confirm The Network Key** on the reverse side for the Network Key (password).

B-4

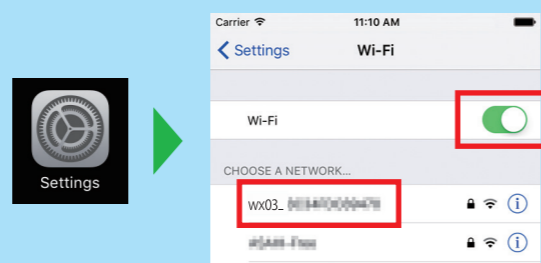
If the status is "**Connected**" then settings are complete.



C iPhone / iPad (iOS) Wi-Fi connection method

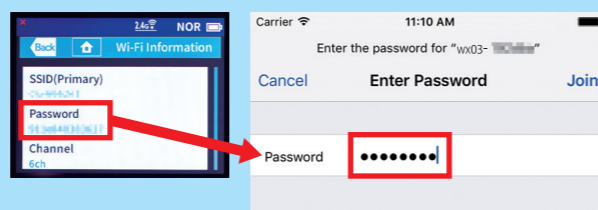
C-1

Select the **Settings** icon, and then tap **Wi-Fi**. Turn Wi-Fi ON, and then select the network name starting **WX03-**.



C-2

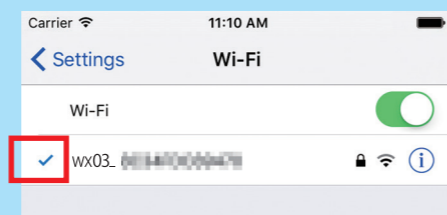
Refer to A-1 **How To Confirm The Network Key** on the reverse side and enter the Network Key in the **Password** field, then tap **Connect**.



Refer to A-3 **How To Confirm The Network Key** on the reverse side for the Network Key (password).

C-3

If the **WX03-xxxxxxx** connection has a checkmark beside it then settings are complete.



Please continue to

4 Make Connection Settings

4 Make Connection Settings

Step 1

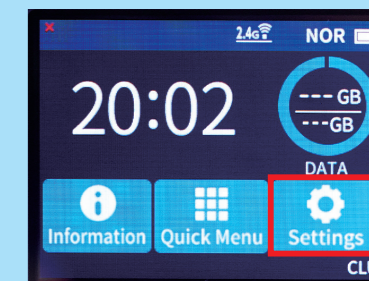
When the WX03's power button is lightly pressed, the lock screen is displayed. Long press the lock icon for more than 1 second to remove the lock.

* To unlock in sleep mode, long press the power button.



Step 2

On the home screen, press Setting.



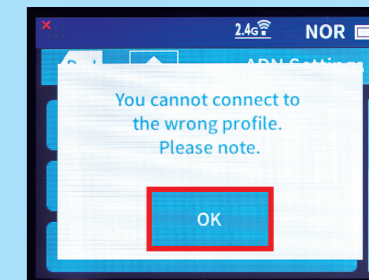
Step 3

The Settings screen is displayed. Slide to the bottom and press APN Settings.



Step 4

A precaution is displayed. Press OK.



Step 5

On the Profile management screen, select AN01(*) and then press its check button.

* To use a fixed IP address, select AN02.



The settings are now complete

Should you need assistance, please contact our English support line.

03-6631-0861 10am to 5pm,
Monday through Friday.
For calls from a NTT landline in Japan 0120-577-135

