

# Setup Guide

Speed Wi-Fi NEXT  
**W03**

## Getting Ready

Remove ① and ② from the packaging. Have your own device to hand.



① W03 unit

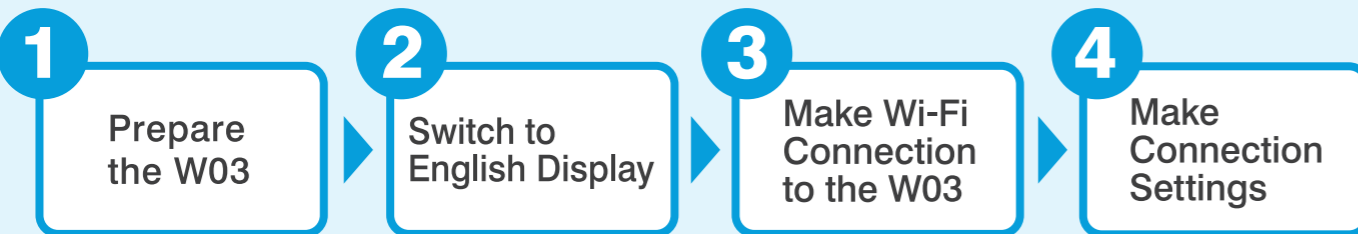


② au Micro IC card



③ Your own device  
(Wi-Fi Capable)

## Steps to making settings



## 3 Make Wi-Fi Connection to the W03

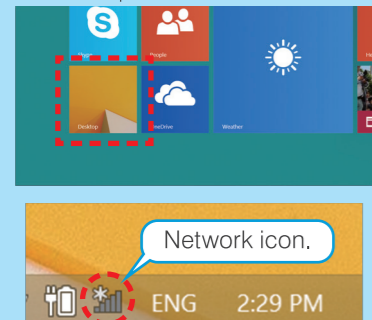
### A PC (Windows 8) Wi-Fi connection method

If using a tablet or smartphone, see the reverse of this sheet.

#### A-1

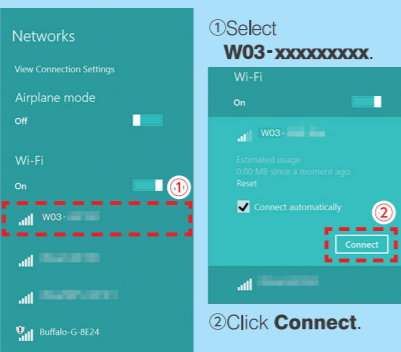
From the **Start** screen, select **Desktop**, and then click the network icon (task tray).

The Desktop shown on the Start screen.



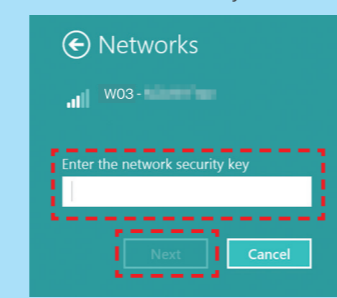
#### A-2

In the **Networks** list, find a name (SSID) starting W03- then click Connect.



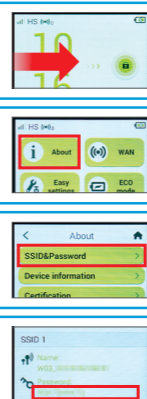
#### A-3

Refer to the right-hand **How To Confirm The Network Key** chart and then, at the **Enter the network security key** prompt, enter the network key. Click **Next**.



#### How To Confirm The Network Key

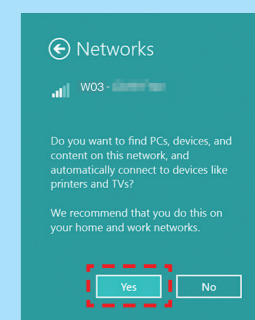
- 1 Gently press the W03's POWER button to turn it on, then unlock the display to see the Home screen.
- 2 On the Home screen, tap **About**.
- 3 Tap **Next**, then **Manual Settings** which allows you to see the SSID and password.
- 4 The password displayed is the **Network Key** you need to enter into your device.



#### A-4

When asked **Do you want to turn on sharing between PCs and connect to devices on this network?** Select **Yes**, turn on sharing and connect to devices.

If the status of the **W03-xxxxxxx** connection in the **Networks** list is **"Limited"** then settings to this point are complete.



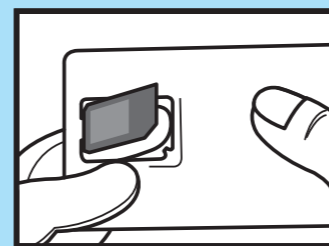
Please continue to the reverse side for

### 4 Make Connection Settings

## 1 Prepare the W03

### 1. Remove the IC card from the card holder.

As shown in the diagram, remove the au Micro IC card from the card holder.

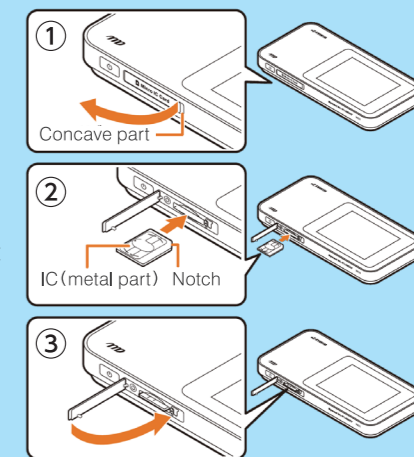


### 2. Insert the IC card into the W03.

① Open the IC Card slot cover of the W03 unit and

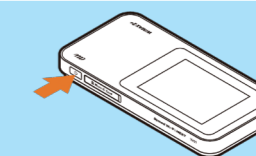
② Insert the au Micro IC Card with its metal side down into the slot until it clicks into position.

③ Press the slot cover back into position.



### 3. Charge the W03, and then turn it on.

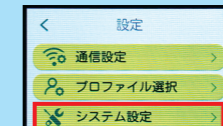
After charging up the W03 unit, hold down its power button for up to 3 seconds until it turns on.



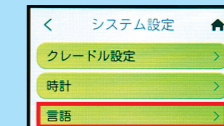
## 2 Switch to English Display



① In the Home screen of the W03 unit, tap the green 設定 (Settings) button.



② Tap the システム設定 (Tools) button.



③ Tap the 言語 (Language) button.



④ Select English and then tap. The menus will turn into English.

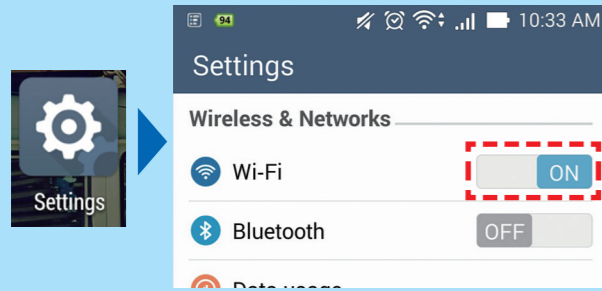
# 3 Make Wi-Fi Connection to the W03

If using a PC, please see the reverse of this sheet.

## B Tablet or smartphone (Android) Wi-Fi connection method

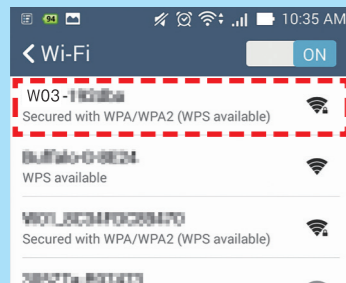
### B-1

In the **Settings** menu, under **WIRELESS & NETWORKS**, make sure **Wi-Fi** is ON.



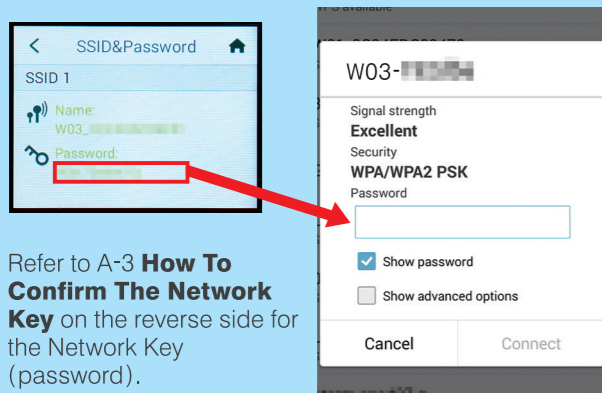
### B-2

Select the network name starting **W03-**.



### B-3

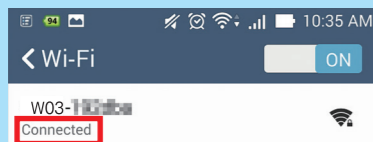
Refer to A-3 **How To Confirm The Network Key** on the reverse side and enter the Network Key in the **Password** field, then tap **Connect**.



Refer to A-3 **How To Confirm The Network Key** on the reverse side for the Network Key (password).

### B-4

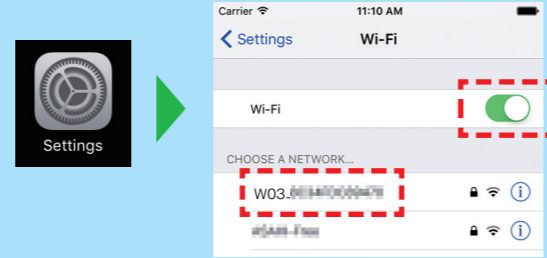
If the status is **"Connected"** then settings are complete.



## C iPhone / iPad (iOS) Wi-Fi connection method

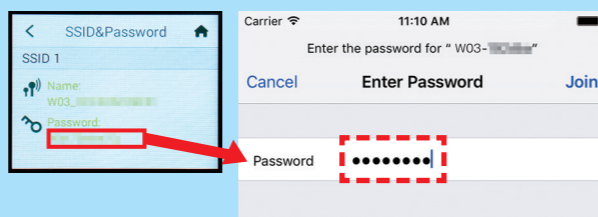
### C-1

Select the **Settings** icon, and then tap **Wi-Fi**. Turn Wi-Fi ON, and then select the network name starting **W03-**.



### C-2

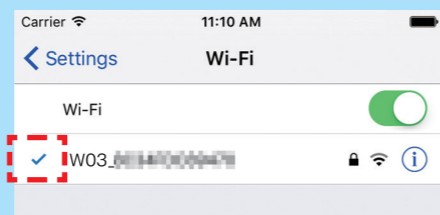
Refer to A-3 **How To Confirm The Network Key** on the reverse side and enter the Network Key in the **Password** field, then tap **Connect**.



Refer to A-3 **How To Confirm The Network Key** on the reverse side for the Network Key (password).

### C-3

If the **W03-xxxxxxx** connection has a checkmark beside it then settings are complete.



Please continue to

# 4 Make Connection Settings

# 4 Make Connection Settings

## Step 1

Gently press the W03's **POWER** button to turn it on. The time will be shown. Slide the screen left and right to unlock the W03.



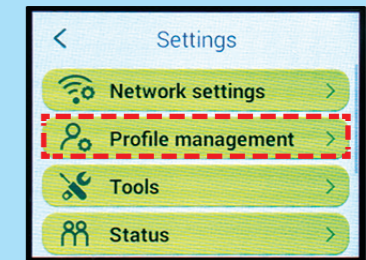
## Step 2

On the home screen, press **Settings**.



## Step 3

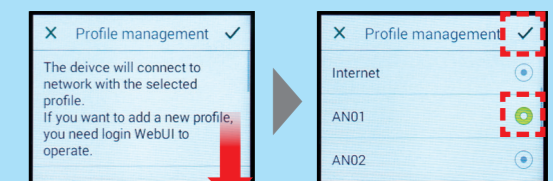
On the **Settings** screen, press **Profile management**.



## Step 4

On the **Profile management** screen, select **AN01(\*)** and then press its check button.

※ To use a fixed IP address, select AN02.



The settings are now complete

Should you need assistance, please contact our English support line.

**03-6631-0861** 10am to 5pm,  
Monday through Friday.  
For calls from a NTT landline in Japan 0120-577-135

